

luxe.

interiors + design®

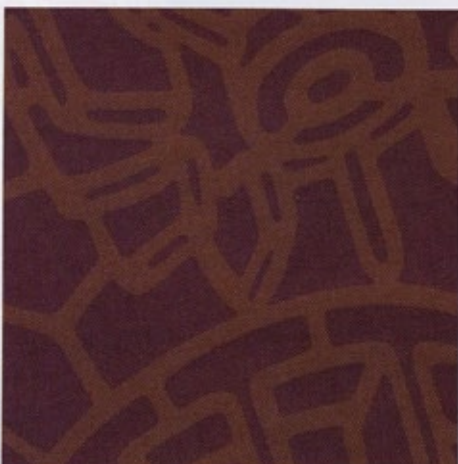
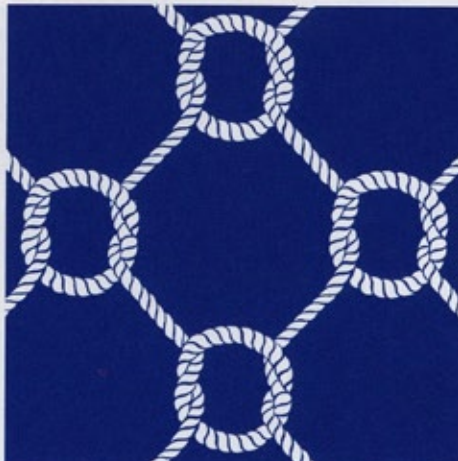
NEW YORK
PREMIER EDITION



\$ 9.95 A RANDOM MEDIA PUBLICATION



0 71486 03366 0



+ OUTSIDE THE LINES

Clockwise from top left: Gee Gee, shown in Bisque, from the Atomic Age Collection, Bradbury & Bradbury Art Wallpapers, \$58 per roll, bradbury.com; Ropes Reverse Wallpaper, Jonathan Adler, \$195 per one triple roll, jonathanadler.com; Mota Shang, shown in Mulberry, John Mahoney Designs, \$210 per roll, johnmahoneydesigns.com; Scrapwood Wallpaper, shown in White, Studio Ditte, price available upon request, studioditte.nl; *Opposite:* Dreamscape Mural, by Rebekah Maysles, Anthropologie, \$298 per wallpaper mural, anthropologie.com

STYLE SELECTION

Shown in the Brussels Pearl colorway, Jonathan Adler's fully upholstered bench features crisscrossing legs and a trendy silhouette. X Bench, \$595; jonathanadler.com



CONTINUED FROM PAGE 179

house and the new master suite, the peaked ceiling is clad with wide barn-like boards, lacquered high-gloss white for what Watson calls "a loft-like feel with a harder urban edge."

The grand living room also contains the house's most striking tour de force: a fractured-limestone chimney breast. "We could have stopped halfway, but we brought it all the way up to make the ceiling soar," Watson says. The dramatic fireplace creates an intriguing textural foil for a custom willow chandelier and Shaker-style paneled built-ins with a pickled patina, which warm the room visually while disguising media equipment.

The homeowners, who are modern design enthusiasts, helped choose furnishings ranging from classic to near-avant garde. Well-proportioned, custom-designed





PERFECT HARMONY

The built-in bookcases and traditional mantel were retained in the original living room, now known as the music room (a grand piano rests at the side). The clean-lined sofa, side tables and armchair are all vintage modern pieces from Century Furniture. The hand-stenciled sisal carpet adds texture and a relaxed, beachy feel.