

DECEMBER 2011 £4.00

# ELLE DECORATION

SPECIALIST CONSUMER MAGAZINE OF THE YEAR

*Winter Luxe*

#### HOME COUTURE

The fashion stars with designs on your interior

#### EASY UPDATES

6 clever ways to display art

#### FOCUS ON DINING

Best new tables and chairs, stylish settings and cool crockery

#### BRITISH DESIGN AWARDS

The 2011 winners: revealed!



## CHRISTMAS SPECIAL

Your ultimate gift guide • Original ideas for guilt-free giving • How to outsource Christmas  
• The best wrapping paper, cards and baubles

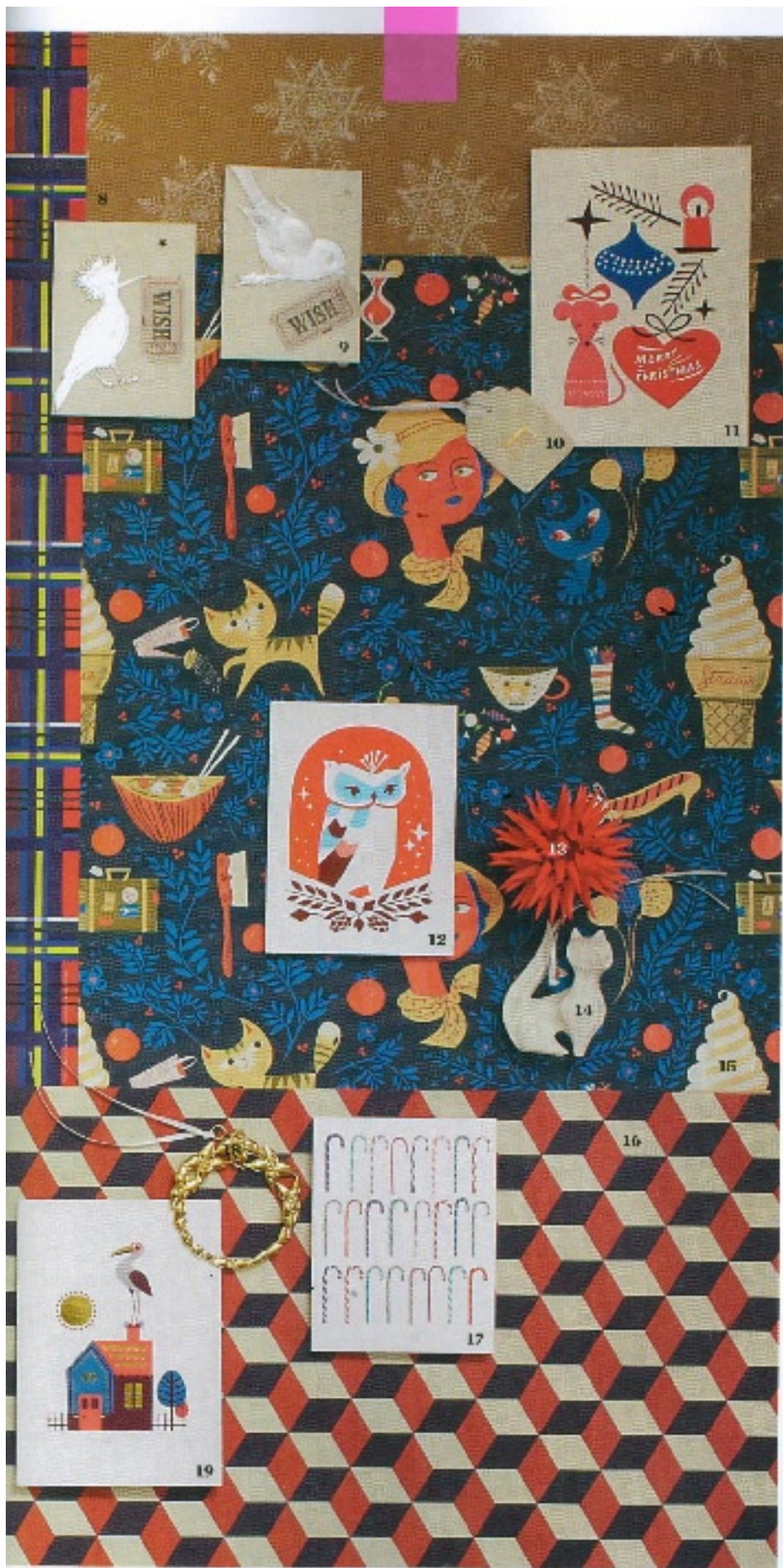
## Festive finish

Graphic gift wrap, arty cards and handcrafted ornaments make for a stylish Christmas

Pictures ANGELA MOORE

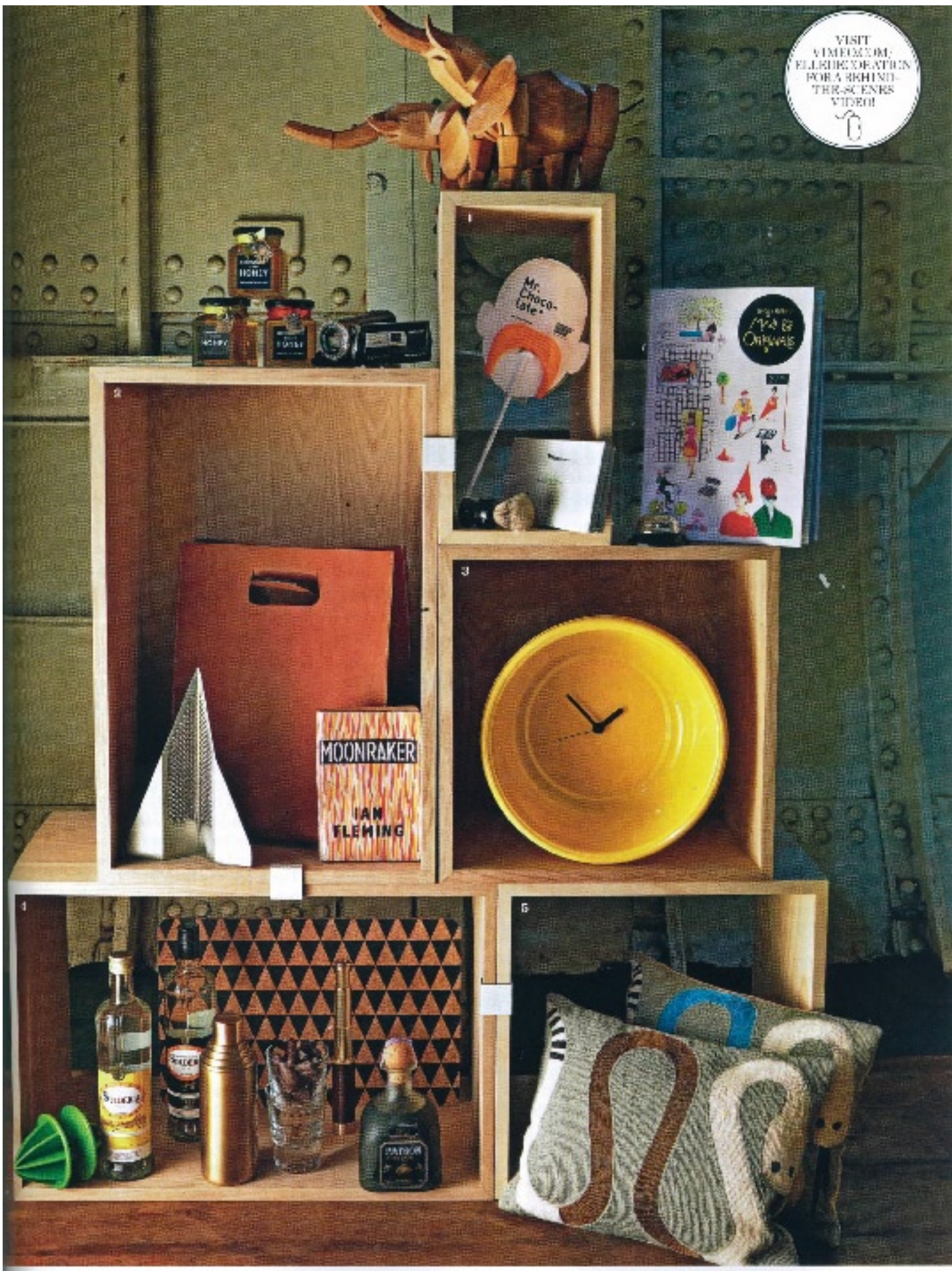
Clockwise from top left:

- 1 'Swallow' paper, £1.70 per sheet, Gwendolen ([gwendolenstudio.co.uk](http://gwendolenstudio.co.uk))
- 2 'Flowers and Foliage' paper/bambles, £10 for a set of three, Sarah Marpeth ([sarahmarpeth.com](http://sarahmarpeth.com))
- 3 Balls, £8.95 for 12, Selfridges ([selfridges.com](http://selfridges.com))
- 4 'Tartan Duff' paper, £2.20 per sheet, Prints ([prints-international.com](http://prints-international.com))
- 5 'O Christmas Tree' card by Scott, £2.50, Magna ([magna.co.uk](http://magna.co.uk))
- 6 'Tulipes 414' card by Helen Durdik, £1.90, Lagom ([lagomdesign.co.uk](http://lagomdesign.co.uk))
- 7 'Ho, Ho, Ho' letterpress card by Archivist, £2, Paperbase ([paperbase.co.uk](http://paperbase.co.uk))
- 8 'Snowflake' paper, £2.50 per sheet, Zosienka Besie ([zosienkarusie.com](http://zosienkarusie.com))
- 9 'Wish' cards by Maggie in the Wardrobe, £5 each, Designers Guild ([designersguild.com](http://designersguild.com))
- 10 Personalised ceramic gift tag, £8, Jo Hedrick ([joheckett.com](http://joheckett.com))
- 11 Card by Darling Clementine, personalised from £1.50, Hello Lucky ([hellolucky.co.uk](http://hellolucky.co.uk))
- 12 'The Wise One' card by Darling Clementine, £2.50, Northlight ([northlightdesign.co.uk](http://northlightdesign.co.uk))
- 13 'Spiky Paper Star' decoration, £9.50 for a box of three, Winter's Moon ([wintersmoon.co.uk](http://wintersmoon.co.uk))
- 14 'Tox' porcelain ornament, £24, Jonathan Adler ([uk.jonathanadler.com](http://uk.jonathanadler.com))
- 15 Paper by Lab Partners, £2.50 per sheet, Nobrow ([nobrow.net](http://nobrow.net))
- 16 Paper, £2, 1078 ([infast.co.uk](http://infast.co.uk))
- 17 Uzzd, £2.50, Banquet ([banquetworkshop.com](http://banquetworkshop.com))
- 18 'Johanne' gold-painted ornament by Rebecca Utz, £50, Georg Jensen ([georgjensen.com/uk](http://georgjensen.com/uk))
- 19 'Stork' card by Ingela, £1.90, Lagom ([lagomdesign.co.uk](http://lagomdesign.co.uk))
- 20 'Christmas Tree' card by Kim Jenkins, £15 for a set of six, Lucky Bird ([luckybird.co.uk](http://luckybird.co.uk))
- 21 Paper by Jill Green for Nobrow, £2.50 per sheet, Nobrow ([nobrow.net](http://nobrow.net))
- 22 'Poppies' paper, £1.70 per sheet, Gwendolen ([gwendolenstudio.co.uk](http://gwendolenstudio.co.uk))
- 23 'Bell' ornament by Marcel Wanders, £4, Marks & Spencer ([marksandspencer.com](http://marksandspencer.com))
- 24 'Star' wood decoration by Emily Bendett-Bayley, £2, Push Graphics ([pushgraphics.com](http://pushgraphics.com))
- 25 'Holiday Wren' card by Snow & Graham, £15.95 for a set of six, Liberty ([liberty.co.uk](http://liberty.co.uk))
- 26 'Big and Snowflake' decoration by Hanna Francis, £9.99, Skandivis ([skandivis.co.uk](http://skandivis.co.uk))
- 27 Ceramic snowflake, £1.9 for a set of four, Designers Guild ([designersguild.com](http://designersguild.com))
- 28 'Clare' wooden ornaments by Fern Living, £69.95 for a set of four, 55% ([55percentshop.co.uk](http://55percentshop.co.uk))
- 29 'Tungin' porcelain ornament, £24, Jonathan Adler ([uk.jonathanadler.com](http://uk.jonathanadler.com))
- 30 'Spiky Paper Star' decoration, £9.50 for a box of three, Winter's Moon ([wintersmoon.co.uk](http://wintersmoon.co.uk)) ▶





VISIT  
VIMEO.COM/  
EJLINDKOPATHEN  
FOR A BEHIND-  
THE-SCENES  
VIDEO!



# SHOPPING

ELLE DECORATION'S *pick of* STYLISH HOME BUYS we KNOW you'll LOVE FOREVER

*Edited by* EMILIO PIMENTEL REID



PHOTO: ANDREW JUNG/ISTOCK.COM/GETTY

## Buy of the month

We have teamed up with John Lewis to create these fun limited-edition mugs in aid of the British Red Cross. Featuring designs by (from left) Jonathan Adler, Charlene Mullen and Fiona Douglas of Bluebellgray, a generous 50 per cent of the £8 price tag goes to the charity. They're on sale now, so snap up your favourite – or all three – before they sell out.

# Charity cup

The three artistic talents behind ELLE Decoration's new limited-edition mug collection, produced in conjunction with John Lewis and in aid of the Red Cross, reveal the inspirations behind their designs



## CHARLENE MULLEN, textile designer

**Why did you agree to take part in this project?** It seemed a perfect opportunity and it's such a good cause.

**Why is the Red Cross important to you?** Whatever the disaster, if the Red Cross is there you know it will make a difference.

**How would you describe your design style?** It has two strands: inspiration from folk art – everything from tattoos to Romanian textiles – and bold geometric patterns.

**What was the inspiration for your mug design?** It was based on 19th-century Swiss paper cuts.

**What does the design mean to you?** I love the idea of making my own forest, with each tree having a story.

**What do you love most about your home?** My living room and studio are spec. plan and glazed back and front, so there's the most amazing light all day and lots of birds in the garden to watch.

**What do you love about ELLE Decoration?** It's always finding great places and the latest trends.

**Tea or coffee in your mug?** Earl Grey. Tea is thinking time for me.



## JONATHAN ADLER, designer

**Why did you agree to take part in this project?** Because the Red Cross rules. I'm a fan and a supporter, I've always given money to it, and you have got to give it up for one of the best logos in the history of logos. Respect!

**How would you describe your design style?** It's rooted in Modernist forms and features bold colours and groovy graphics.

**What was the inspiration for your mug design?** I've always loved a classic flame-stitch bargeolo pattern, and I wanted to bring that idea into the 21st century.

**What does the design mean to you?** It's an updated classic.

**What do you love most about your home?** My couture ping-pong table.

**What do you love about ELLE Decoration?** Everything. I find it surprising, inspiring and extremely jealousy-inducing.

**Tea or coffee in your mug?** It has to be tea.

[jonathanadler.com](http://jonathanadler.com)



## FIONA DOUGLAS, textile designer

**Why did you agree to take part in this project?** The Red Cross is a fantastic cause and it's great to be able to help. I'm a big believer in design making life better.

**Why is the Red Cross important to you?** It provides help to those affected by the most awful natural disasters. The fact it helps people rebuild their homes and lives long after the event is crucial too.

**How would you describe your design style?** Painterly, instinctive and colourful.

**What was the inspiration for your mug design?** Summer flowers – they always brighten my day when I see them.

**What does the design mean to you?** It means brightness, happiness and hope, like that feeling when you see the first flowers after a long winter.

**What do you love most about your home?** It's my sanctuary – the one place where I can truly relax.

**What do you love about ELLE Decoration?** The diversity and quality of design it features – it's a beacon for great design.

**Tea or coffee in your mug?** Always tea, preferably Lady Grey. Nothing perks me up like a cup of tea!

